

CORNELL CORPORATION



BUILDING ENVELOPE INSULATION

QUALITY ENERGY EFFICIENT-GREEN-SUSTAINABLE BUILDING PRODUCTS

NEW! Get BIM Models
at Sweets.com, CornellCorpDirect.com
or CornellCorporation.com



EXTERIOR WALL INSULATION

ThermaCal[®] Wall



EXTERIOR WALL INSULATION

- Add insulation value beyond studwall/sheathing, metal or masonry walls without interior modifications
- Impedes thermal shorting
- Tongue and groove foam for minimal heat loss
- Sheathing pre-spaced for expansion
- R values from 8.1 to 38.1, thickness to 8"
- Featuring  **FOAMULAR[®] XPS**
Energy-Saving, Moisture-Resistant XPS Insulation

See Next Page for Details

ABOVE THE FOUNDATION

Therma RIM Insulated Rim Board

- Green energy-saving solution combining structure and insulation for difficult to insulate areas
- R-11 Insulation ideal for northern climates
- Engineered with dimensionally accurate, APA-Rated Rim Board and OSB bonded with polyisocyanurate foam for maximum thermal efficiency
- Eliminates costly extra trades-saves time and money!
- Sizes from 9-1/2"H to 24"H, 12'L

UPGRADE YOUR WALL INSULATION EASILY WITH CORNELL CORPORATION

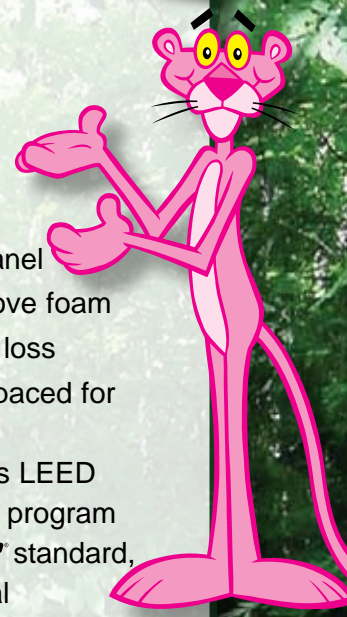


ENERGY EFFICIENT

COMPLETE LINE OF Brochures, Technical Data, CAD details, Nailing Patterns and BIM models available at CornellCorpDirect.com or CornellCorporation.com

ThermaCal Wall

EXTERIOR WALL INSULATION

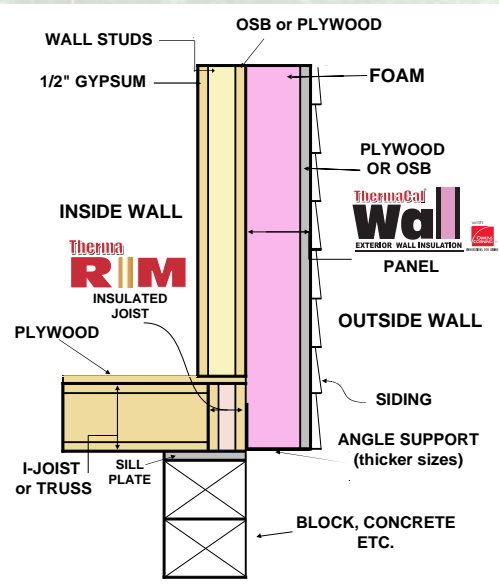


- Fastens to outside wall sheathing and studs, metal or masonry walls without interior modifications
- Adds insulation value outside of stud wall
- Nailable base for siding
- 7/16" OSB sheathing (optional 5/8" or 3/4" OSB or plywood)
- FSC sheathing available
- Nominal 4'x8' panel
- Tongue and groove foam for minimal heat loss
- Sheathing pre-spaced for expansion
- Qualifies towards LEED and Energy Star program
- **FOAMULAR** standard, Iso foam optional



FASTENERS AVAILABLE!
for Insulated Roof & Wall Panels & Rim Board Applications

Typical Cross-Section



Codes And Compliances **Extruded polystyrene complies with C578 and AASHTO M230.** This foam has a flame spread rating of 10. This numeric flame spread rating is not intended to reflect hazards presented by this or any other material under actual fire conditions.



Panel Specifications

	APPROX. OVERALL THICKNESS	WEIGHT P.S.F.	LTRR R-VALUE*
2.0"	51 mm	1.7	8.1
2.5"	64 mm	1.8	10.6
3.0"	75 mm	1.9	13.1
3.5"	89 mm	2.0	15.6
4.0"	102 mm	2.1	18.1
4.5"	114 mm	2.2	20.6
5.0"	127 mm	2.3	23.1
5.5"	140 mm	2.4	25.6
6.0"	152 mm	2.5	28.1
6.5"	165 mm	2.6	30.6
7.0"	178 mm	2.7	33.1
7.5"	190 mm	2.8	35.6
8.0"	203 mm	2.9	38.1

2.5" & 3.5" ThermaCal Wall in stock at cornellcorpdirect.com other sizes made to order.

*For comparison with Long Term Thermal Resistance (LTRR) values used in the Polystyrene Foam Association (OCF, Dow and Pactiv) provided foam aged R values generated per CAN/ULC S770 by a third party laboratory. The nominal foam thickness is 1/2" less than the overall panel thickness.

CORNELL CORPORATION
CORNELLCORPORATION.COM

P.O. BOX 338 • CORNELL, WISCONSIN 54732
ThermaCal is a Registered Trademark of Cornell Corporation

Tele: 888-439-6411 (Central Time)
Fax: 800-267-8368
Email: cornell@cornellcorporation.com

COR-TWALL 2010 Printed in USA Copyright 2009
THE PINK PANTHER™ & © 1964 - 2009 Metro-Goldwyn-Mayer Studios Inc. All Rights Reserved.
The color PINK is a registered trademark of Owens Corning. © 2009 Owens Corning.

